



OXFORD
AMERICA





1-866-PAR4-OXF (727-4693)
www.oxfordgolf.com



- @Oxford Golf



- @OxfordGolfUSA



- @OxfordGolf

Table of Contents

STYLE NAME	STYLE NUMBER	PAGE
Burke Polo	52-1001	3
Calhoun Polo	52-1002	4
Evans Polo	52-1003	5
Whitfield Polo	52-1004	6
Brooks Polo	L2-1025	7
Randolph Polo	AM-1000/AM-1000	8
Mitchell Polo	AM-1004/AM-1004	9
Irwin Polo	L2-1038	10
Grady Polo	L2-1033	11
Forsyth Polo	AM-1003/AW-1003	12
Dawson Polo	AM-1008/AM-1008	13
Chatham Polo	L2-1028	14
Brantley Polo	AM-1001	15
Riverdale Sport Shirt	AM-3019	16
Monroe Jacket/Pullover	AM-1006/AW-1006	17
Webster Jacket/Pullover	AM-5000/AW-5001	18



404 Classic Navy
 002 Black
 684 Rio Red
 100 White
 443 Palace Blue
 708 Popcorn



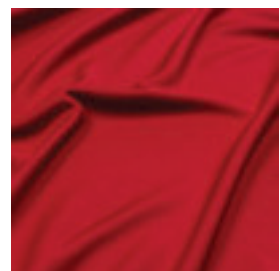
694 Sugar Coral
 539 Dusted Peri
 452 Aruba Blue
 823 Melon
 447 Placid Blue
 355 Zephyr Green

Burke Polo

52-1001
 405910

- Garment Features:
- 100% Polyester Interlock
 - Veri Cool® Wicking Technology
 - Rib Collar
 - Open Sleeves
 - Machine Wash

Men's Sizes: S-XXXL





Garment Features:

- 100% Polyester Interlock
- Two Tone Stripe Ottoman
- Veri Cool® Wicking Technology
- Self Collar
- Open Sleeves
- Machine Wash

Calhoun Polo

52-1002
405420



Men's Sizes: S-XXXL



404 Classic Navy	002 Black	684 Rio Red	443 Palace Blue	694 Sugar Coral	539 Dusted Peri	452 Aruba Blue	355 Zephyr Green
------------------------	--------------	----------------	--------------------	-----------------------	-----------------------	----------------------	------------------------

Evans Polo

52-1003
400620

Garment Features:

- 100% Polyester Interlock
- Embossed Stripe
- Veri Cool® Wicking Technology
- Rib Collar
- Open Sleeves
- Machine Wash

Men's Sizes: S-XXXL



Whitfield Polo

52-1004
400620

Garment Features:

- 100% Polyester Pique
- Engineer Chest Stripe
- Veri Cool® Wicking Technology
- Self Collar
- Open Sleeves
- Machine Wash

Men's Sizes: S-XXXL





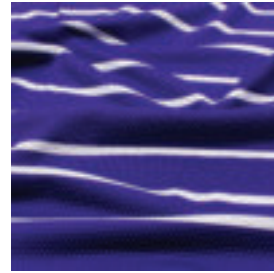
Brooks Polo

L2-1025
405420

Garment Features:

- 100% Polyester
- Pebble Textured Classic Stripe
- Open Sleeves
- Veri Cool® Wicking Technology
- Machine Wash

Men's Sizes: XS-4XL





602 Cardinal 315 Hunter 052* Heather Grey 615 Maroon 752 Vegas Gold 511 Grape 425 Ultra-marine



445 Suf Blue 100 White 840 Sun-kissed 609 Bordeaux 404 Classic Navy 788 Citrus 630 Cherry-wood 002 Black

Randolph Polo

AM-1000/AW-1000
405710

Garment Features:

- 53% Cotton/47% Polyester
- Solid Pique
- Open Sleeves
- Veri Cool® Wicking Technology
- Machine Wash

Men's Sizes: S-4XL

Ladies' Sizes: XS-XXXL



*Only available in Men's.



788
Citrus

100
White

445
Surf Blue

602
Cardinal

404
Classic
Navy

630
Cherry-
wood

Mitchell Polo

AM-1004/AW-1004

405420

Garment Features:

- 100% Polyester
- Embossed Sketch Plaid
- Open Sleeves
- Veri Cool® Wicking Technology
- Machine Wash

Men's Sizes: S-XXXL

Ladies' Sizes: XS-XXL



002
Black

615
Maroon

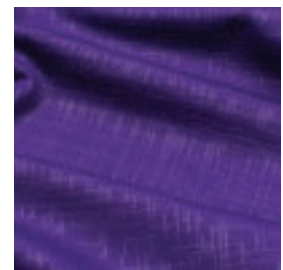
511
Grape

840
Sunkissed

425
Ultra-
marine

315
Hunter

069
Ice





788 Citrus 100 White 445 Surf Blue 602 Cardinal 404 Classic Navy 630 Cherrywood



002 Black 615 Maroon 511 Grape 840 Sunkissed 315 Hunter 069 Ice

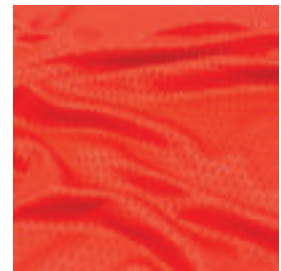
Irwin Polo

L2-1038
405420

Garment Features:

- 100% Polyester
- Solid Embossed Honeycomb
- Open Sleeves
- Veri Cool® Wicking Technology
- Machine Wash

Men's Sizes: XS-XXXL





Grady Polo

L2-1033
405420

Garment Features:

- 100% Polyester
- Solid Textured Stripe
- Open Sleeves
- Veri Cool® Wicking Technology
- Machine Wash

Men's Sizes: XS-*4XL



*Not available in all colors.



788 Citrus 100 White 445 Surf Blue 602 Cardinal 404 Classic Navy 630 Cherrywood



002 Black 615 Maroon 511 Grape 840 Sunkissed 425 Ultra-marine 315 Hunter 069 Ice

Forsyth Polo

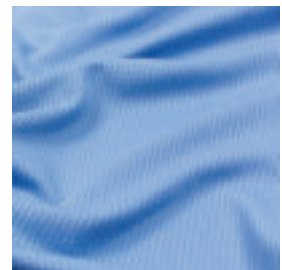
AM-1003/AW-1003
400120

Garment Features:

- 100% Polyester
- Mico Check Texture
- Open Sleeves
- Veri Cool® Wicking Technology
- Machine Wash

Men's Sizes: S-XXXL

Ladies' Sizes: XS-XXL





788 Citrus 100 White 445 Surf Blue 602 Cardinal 404 Classic Navy 630 Cherrywood



002 Black 615 Maroon 511 Grape 840 Sunkissed 425 Ultra-marine 315 Hunter 069 Ice

Dawson Polo

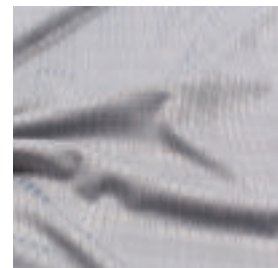
AM-1008/AW-1008
405420

Garment Features:

- 100% Polyester
- Solid Textured Plaid
- Open Sleeves
- Veri Cool® Wicking Technology
- Machine Wash

Men's Sizes: S-XXXL

Ladies' Sizes: XS-XXL





Chatham Polo

L2-1028
405420

Garment Features:

- 93% Polyester/7% Spandex
- Jacquard Self Collar
- Open Sleeves
- Veri Cool® Wicking Technology
- Machine Wash

Men's Sizes: XS-4XL



788 Citrus 100 White 445 Surf Blue 602 Cardinal 404 Classic Navy 630 Cherrywood



002 Black 615 Maroon 511 Grape 840 Sunkissed 471 Blue Tide 609 Bordeaux

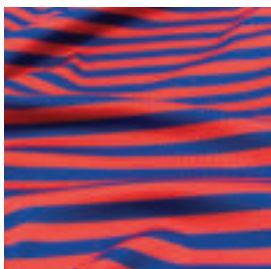


Brantley Polo

AM-1001
405420

- Garment Features:
- 100% Polyester Interlock
 - Yarn Dye Stripe
 - Open Sleeves
 - Veri Cool® Wicking Technology
 - Machine Wash

Men's Sizes: S-XXXL



788 Citrus 002 Black 445 Surf Blue 00C Black/ Cardinal 404 Classic Navy 630 Cherrywood 00S Black/ Sunkissed



615 Maroon 51W Grape 40S Classic Navy/ Sunkissed 42W Ultramarine 315 Hunter 511 Grape/ Citrus 425 Ultramarine/ Sunkissed



Garment Features

- 97% Cotton/3% Spandex
- Solid Poplin
- Button Down Collar
- Machine Wash

Men's Sizes: S-XXXL

Riverdale Sport Shirt

AM-3019
405230



002
Black

259
British Tan

404
Classic Navy

445
Surf Blue

511
Grape

840
Sunkissed

100
White



Monroe Jacket and Pullover

AM-1006/AW-1006
405730

002 Black 615 Maroon 511 Grape 840 Sunkissed 425 Ultramarine 315 Hunter 069 Ice



788 Citrus 100 White 445 Surf Blue 602 Cardinal 404 Classic Navy 630 Cherrywood

Garment Features:

- 92% Polyester/8% Spandex
- Jersey Microfleece
- Full Zip Ladies/Quarter Zip Men
- Veri Cool® Wicking Technology
- Machine Wash

Men's Sizes: S-XXXL

Ladies' Sizes: XS-XXL





Garment Features:
 -100% Polyester Ripstop
 - Water Resistant
 -Machine Wash

Men's Sizes: S-XXXL

Ladies' Sizes: XS-XXL

Webster Jacket and Pullover

AM-5000/AW-5001
 400630



511*
 Grape
 Citrus Zippers

602*
 Cardinal
 Black Zippers

427*
 Classic Navy
 Grey Zippers

40S*
 Classic Navy
 Sunkissed Zippers

404*
 Classic Navy
 Cardinal + White
 Zippers

425*
 Ultramarine
 White Zippers

002*
 Black
 Grey Zippers

615*
 Maroon
 White Zippers



* Available colors for ladies. No contrast zippers on ladies.



OXFORD
AMERICA

